



ODORIZERS

planet-friendly solutions

that just make scents!



# GPL 5000 ODORIZER

**Natural Gas and Propane (LP) Odorization  
for High Flow at Low-Pressure Conditions**

**THE FUTURE OF ODORIZATION NOW**

**What others call "next-gen" has  
always been our standard.**



## **GPL 5000 NATURAL GAS & PROPANE ODORIZER**

The GPL 5000 is an advanced odorizer ideal for natural gas and propane odorization, particularly in high-flow stations at low pressures. The odorizer utilizes proprietary technology and has high rangeability, delivering extraordinary high and low flow accuracy.

Differential pressure drives the GPL 5000, not gas, thereby saving pipeline gas. Also, the odorizer has odor-free operation and maintenance, and a sealed-loop system means the unit is emission-free, never discharging gas or odorant into the atmosphere.

### **GPL ODORIZERS' STANDARD**

no emission design  
odor-free operation & maintenance  
simple to operate & maintain  
modern  
reliable - safe - accurate  
24/7 technical support



### **ADVANCED AND YET SIMPLE TO OPERATE**

The industry-leading PLC has a large (7") intuitive touchscreen making controlling and monitoring the system simple. The system interfaces with Modbus. Setting up audit trail reports for company programs or regulatory compliance is uncomplicated. Also, a Spanish mode is available upon request.

Real-time mobile alerts to smartphones and computers using a wireless modem or Modbus stop minor issues from becoming big problems and speed up restoration time.

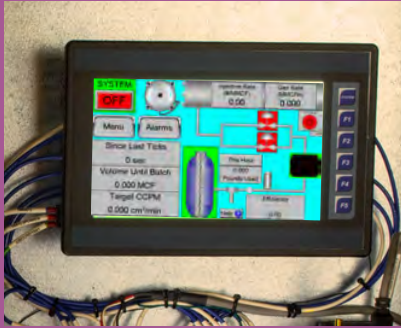
While the GPL 5000 is ideal for natural gas and propane in high-flow conditions at low pressures, the unit can odorize biogas or biomethane also. It's appropriate for municipalities, small city gate stations, and large stations if at low pressure.

**GPL**   
**ODORIZERS**  
planet-friendly solutions  
that just make *scents!*

GPL Odorizers | [www.GPLOdorizers.com](http://www.GPLOdorizers.com)



# GPL 5000 FEATURES - BENEFITS



## ECO-FRIENDLY AND NO SMELL

- Zero emissions
- A sealed loop system means no smell operation & maintenance
- Lowers leak-call complaints
- Does not use gas to actuate the system - saves pipeline gas

## PATENTED GPL PRECISION

- Precise odorant injection relative to gas flow
- Eliminates under- or over-odorization issues
- High rangeability (high turndown - 512:1)
- Accuracy over a wide flow range (even no flow)

## ADVANCED DOESN'T MEAN COMPLICATED

- Low maintenance - no smelly pneumatic pumps to maintain
- Only two moving parts - long-lasting performance
- Easy to learn & simple operation

## LEADING COMMUNICATIONS MAKE MONITORING SIMPLE

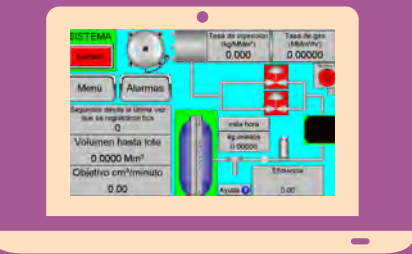
- Horner PLC with intuitive 7" color touchscreen display
- SD card data storage stores data for audit trail reports
- Interfaces with Modbus (SCADA Systems)
- GPL custom Spanish mode on request
- Wireless modem
- Real-time critical and soft alarms to smartphones (and computers)
- Easy-to-use software (no additional software required)

## OPTIONS

- CII D1 hazardous location class (CID2 standard)
- Heater
- GPL 100 thermal mass flow
- Thermoelectric generator

## DESIGN CONFIGURATION

- Odorizer only
- With tank (60, 120, 250, 500, 1000 gallon)
- Turnkey system on a moveable skid
- Skid extension (for additional equipment)
- Portable (easy to move, transport and disassemble)



# GPL 5000 SPECIFICATION SHEET



## GPL 5000 Design Configurations

- Odorizer only
- With tank and containment
- Permanent, temporary or pickling
- Turnkey (moveable) system
- With skid extension

## Options for GPL 5000

- CI I Div 1
- Heater
- GPL 100 mass flow meter
- Thermoelectric generator



*Pictured are turnkey (moveable) systems.*

## Weight

85 lb. (39 kg)  
Mechanical box: 55 lb. (25 kg)  
Electronics box: 30 lb. (14 kg)

## Power

Typical: 2 amps DC w/ wireless modem  
Optional: 3 amps is typical w/ heated display and wireless modem  
Optional: TEG

## Gas Pipeline Pressure

1 to 400 psi (0.07 to 28 bar)

## Odorant Blanket Pressure

10 to 15 psi (1 bar)

## Data Logging

Hourly archives with audit trail;  
FTP data retrieval; internal micro SD storage

## Enclosures

304 stainless steel

## Hazardous Area Classification

Standard: CI I Div 2, Groups C and D  
Optional: CI I Div 1

## Dimensions

Mechanical Box: 24" (H) x 20" (W) x 10" (D); (60.96 cm x 50.8 cm x 25.4 cm)  
Electrical Box: 20" (H) x 16" (W) x 9" (D); (50.8 cm x 40.64 cm x 22.86 cm)

## Odorant Injection Rate, Batch

0-512.8 MMSCFD [at an injection rate of 0.5 lb./MMSCFH]

## Connections

Myers hub: (1) 3/4 in NPT; (5) 1/2 in NPT  
Odorant inlet: 1/4 in Swagelok tubing  
Odorant outlet: 1/4 in Swagelok tubing fitting

## Operating Temperature Range

0 to 120°F (-18 to 49°C)  
Optional: heater assembly available for below 0°F (-18°C)

## User Interface Options:

- 320x240 LCD color graphics display with touchscreen
- IP remote communication

The end user is responsible for analyzing, testing, and selecting suitable products and materials for their applications. The end user must ensure the equipment is installed correctly and adheres to the manufacturer's maintenance recommendations. Improper selection, installation, or use may result in personal injury, property damage, and a void of warranty.



# PIONEER OF ZERO-EMISSION ODORIZATION



## WE WERE GREEN BEFORE IT WAS COOL.

GPL Odorizers is the pioneer of emissions-free gas odorization. Relying on 20+ years of field-proven DP odorization principles, the GPL odorizers have a sealed loop system, meaning no odorant or gas discharge and no smell operation and maintenance. The systems tackle the most challenging odorization applications and utilize cutting-edge technology, yet are simple to operate and maintain. GPL Odorizers is a WBE-certified small business.

## 24/7 TECHNICAL SUPPORT TECHNICIAN

All GPL Odorizers' customers receive a direct technical support line (not a help-desk technician or an answering service). The customer is greeted by a professional, friendly, and informative technician or engineer sincerely interested in resolving their concerns.

## GPL ODORIZERS

12450 W. Cedar Drive  
Lakewood, CO 80228  
303.927.7683  
[info@gplodorizers.com](mailto:info@gplodorizers.com)  
[www.GPLOdorizers.com](http://www.GPLOdorizers.com)



## CONTACT OUR DISTRIBUTOR

Linc Energy Systems is the prime GPL Odorizers distributor, authorized equipment trainer, and service provider. The company offers a 1-Source Odorization Program ensuring a comprehensive turnkey odorization system that minimizes client oversight and scheduling challenges. The program includes planning & engineering, acquisition, operations, maintenance, disposal, and decommissioning. The company is a WBE Certified business.

## LINC ENERGY SYSTEMS

303.697.6701  
[info@LincEnergySystems.com](mailto:info@LincEnergySystems.com)  
[www.LincEnergySystems.com](http://www.LincEnergySystems.com)



GPL Odorizers | [www.GPLOdorizers.com](http://www.GPLOdorizers.com)



# MODEL COMPARISON

GPL 750

GPL 5000

GPL 10000

Appropriate Flow Conditions

Low, intermittent,  
& no flow

low & high flow,  
medium pressure

High-pressure,  
high flow

Gases

Natural gas, RNG, biogas

Natural gas, RNG, biogas,  
propane (LP)

Natural gas

Applications

Municipalities, small city  
gate stations

Municipalities, small-large  
city gate stations at low  
pressure

Large city gate stations,  
transmission lines

Odorant Injection Type

Batch

Batch

Continuous

Actuated by  
[not actuated by pipeline gas]

Differential Pressure

Differential Pressure

Electric-powered dual  
bellows pump

Zero Emissions



Odor Free Operation and Maintenance



Gas Pipeline Pressure

1 to 225 PSI

1 to 400 PSI

Up to 1480 PSI

Odorant Injection Min – Max Flow Rate  
[@0.5 lbs./MMSCFH]

0-18 (std); 0-24 MMSCFD  
(HC model)

0-512.8 MMSCFD

0.48-240 MMSCFD

Turndown Ratio

180,000:1

512:1

500:1

Operating Temp Range  
[Heater assembly option for below 0°F]

0 to 120°F (-18 to 49°C)

0 to 120°F (-18 to 49°C)

0 to 140°F (-18 to 60°C)

Horner Controller 7" color touchscreen  
[Optional: 4" and Spanish mode]



Tank Sizes

60, 120, 250 gal

60, 120, 250, 500, 1000  
gal

60, 120, 250, 500, 1000  
gal

Hazardous Area Class

CL I Div 2 Groups C & D  
CL I Div 1 (optional)

CL I Div 2 Groups C & D  
CL I Div 1 (optional)

CL I Div 2 Groups C & D

Design Configuration: Odorizer Only



with tank and containment skid



with skid extension



Complete Systems permanent



temporary or pickling



portable system (easy to move)



turnkey system (movable)

