

IntegriFuse™

Polyethylene Ball Valves



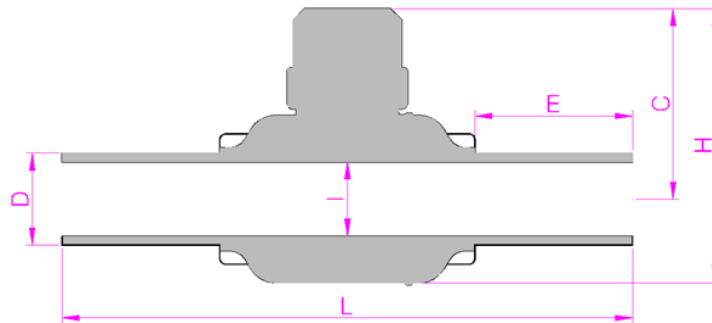
Butt Fusion

Socket Fusion

Transitions

Poly Ball Valves

Equipment

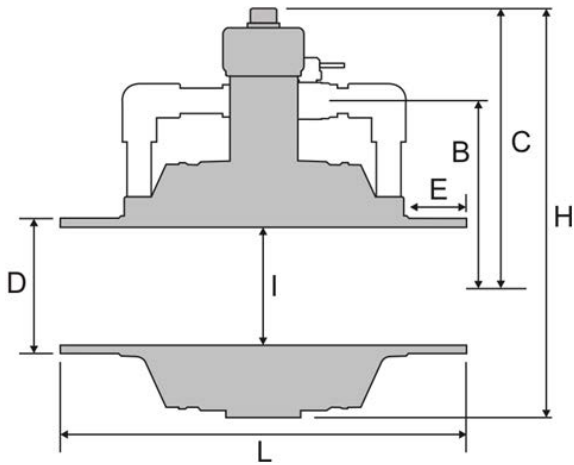


Small Valve Sizes and Dimensions with 2" Operating Nut
Black or Yellow Valves Available

Nominal Valve Size	Port	PE Wall SDR	Normal OD "D"	Min W/T	L	H	C	I	E	CV	Weight lbs.
1/2" IPS	Full	SDR 11	0.84	.076	11.50	5.12	3.70	1.06	3.62	20	1.04
3/4" IPS	Full	SDR 11	1.05	.095	11.50	5.12	3.70	1.06	3.62	32	1.06
1" IPS	Full	SDR 11	1.32	.119	11.50	5.12	3.70	1.06	3.62	50	1.06
1 1/4" IPS	Reduced	SDR 11	1.66	.151	11.50	5.12	3.70	1.06	3.62	79	1.08
1 1/2" IPS	Reduced	SDR 11	1.90	.173	11.81	5.51	3.78	1.26	3.15	104	1.74
2" IPS	Full	SDR 11	2.38	.216	19.53	9.65	7.01	1.77	6.69	164	4.63
3" IPS	Full	SDR 11	3.50	.318	21.18	11.81	8.50	2.52	6.69	375	8.82
4" IPS	Full	SDR 11	4.50	.409	24.02	14.92	10.39	3.58	6.69	591	18.74
6" IPS	Full	SDR 11	6.63	.602	26.18	18.94	13.03	4.80	6.69	1280	39.90
8" IPS	Full	SDR 11	8.63	.785	30.12	24.80	16.57	6.69	6.69	2146	91.71

Valves meet ASTM D 2513 requirements, ISO 9001, and are manufactured with materials that are approved for water contact as defined by NSF





STANDARD 10" IPS Full Port Through 16" IPS PE VALVES Short Gear Actuator & Differential Bypass Assembly

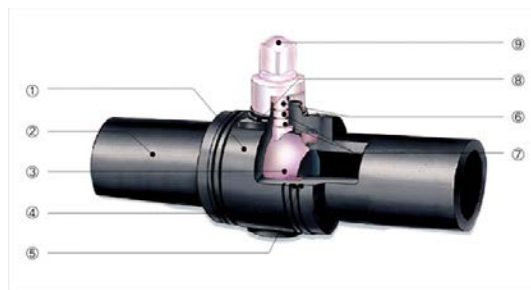
Nominal Valve Size	Port	PE Wall SDR	Normal OD "D"	Min W/T	L	H	C	B	I	E	CV	Weight lbs.
10 IPS	Full	SDR 11	10.750	.978	30.12	31.89	23.66	N/A	7.95	7.09	3074	103.13
12 IPS	Full	SDR 11	12.750	1.160	38.50	38.58	26.16	17.36	11.38	5.71	4746	263.45
14 IPS	Full	SDR 11	14.000	1.273	35.83	38.58	26.16	17.56	11.38	5.71	5736	226.09
16 IPS	Full	SDR 11	16.000	1.455	35.83	38.58	26.16	18.23	11.38	5.71	6559	274.91

10" Valves do not include the Differential Bypass Assembly.

Valves meet ASTM D 2513 requirements, ISO 9001, and are manufactured with materials that are approved for water contact as defined by NSF



IntegriFuse™



Number	Component	Material	Features
1	Body	Polyethylene	PE3408/PE100, PE 2406
2	End	Polyethylene	PE3408/PE100, or PE 2406
3	Ball	Acetal / Polypropylene*	Excellent Strength & Thermal Resistance
4	Retainer	Polypropylene	Positive seal under any condition. Retains seat under high differential pressure
5	Ball Seat	Nitrile (HNBR)	Reliable sealing from -20° F to 140° F
6	Stem	Acetal	Excellent durability & strength
7	Stem Seal	Nitrile (HNBR)	Redundant sealing with dual O-rings
8	Weather Seal	Nitrile (HNBR)	Protects from ground water and dirt
9	Operating Nut	Polypropylene	2 inch (50mm) square or hexagon
10	Purge Connector	Polyethylene	Integral easy purge connection

Note: The IntegriFuse valve utilizes a specially compounded Nitrile (HNBR) seal, unique in the industry. HNBR = Hydrogenated Nitrile rubber, known for its excellent high temperature performance, tensile strength, as well as high resistance to fuels, oils, solvents, and ozone.

2" IPS Reduced Port valves and smaller—Acetal 2" IPS Full Port valves and larger—Polypropylene

Item	Operating Feature
Designed/Tested	Valves meet ASTM D 2513 requirements, ISO 9001, and are manufactured with materials that are approved for water contact as defined by NSF
Materials	PE3408/PE100 Black SDR 11 rated @ 100 PSI for gas & 200 PSI for water PE2406 Yellow SDR 11 rated @ 80 PSI for gas
Temperature	From -20° F to 140° F (-20° C to 60° C)
Bore	Reduced and Full Port
Pipe Connection	Butt Fusion
Valve Boxes	IntegriFuse valves are supported by all the leading valve box manufacturers

Hydrostatic Strength Test

TEMP: 74° F	TEMP 100° F	TEMP: 176° F
1000 Hours	1000 Hours	170 Hours
265 PSI	214 PSI	136 PSI

