

# LincEnergy Systems

making a measurable difference

Linc Energy Systems  
12450 W. Cedar Dr.  
Lakewood, CO 80228

Confused by line pressure and appliance regulator standards? See our blog at <https://www.lincenergysystems.com/linc-energy-blog/entry/Maxitrol-Regulators>

## Preston's Picks • Maxitrol Regulators



[Maxitrol 325-L Series](#), line pressure regulators, are certified for 2-PSI lines in applications with outlet pressures ranging 7 to 11 inches WC. The regulators deliver positive dead-end lockup capable of precise control from full-flow down to pilot-flow. In **2-PSI** systems, a factory-assembled overpressure protection device (OPD) is required, in addition to appliance regulator (s) (RV Series or 210 with vLimiter) on any line appliances.



For **indoor installations**, a vent limiting device (vLimiter) eliminates the need to vent the regulator to the outdoor atmosphere.

For **outdoor applications**, the vProtector shields the breather hole from snow, rain, dust, insects, and other foreign objects. When using a vProtector, mount the regulator in an upright position.

See page 2 for model and sizes.

**Do not confuse the Maxitrol 325-L with the Maxitrol 325 Series.**

If it does not have an "L" designation, it is not a line pressure regulator - it is an appliance-only regulator.

**Maxitrol 325 Series**  **Maxitrol 325-L Series**

Maxitrol's RV, R, and RS Series and 325 Series regulators (325-3, 325-5, 325-7A and 325-9) are certified ANSI Z21.18/CSA 6.3 as appliance regulators.

Maxitrol's 325-L Series regulators are certified ANSI Z21.80/CSA 6.22

Get the latest scoop [LincEnergySystems.com/Linc-Energy-Blog](https://www.lincenergysystems.com/Linc-Energy-Blog)

## Maxitrol 325-L Series Regulators

Model	Description	Pipe Size	Max PSI	vLimiter (Indoor) Optional	vProtector (Outdoor) Optional
325-3L	Line Regulator	3/8", 1/2"	2	12A09	13A15
325-5L	Line Regulator	1/2", 3/4" 1"	2	12A39	13A15-5
325-7AL	Line Regulator	1 1/4, 1 1/2	2	12A49	13A25
325-9L	Line Regulator	1 1/2, 2"	2	12A49	13A25
325-3L48	Line Regulator with OPD	1/2"	5	12A09	13A15
325-5L48	Line Regulator with OPD	1/2", 3/4"	5	12A09	13A15
325-5L600	Line Regulator with OPD	3/4", 1"	5	12A09	13A15
325-7AL210D	Line Regulator with OPD	1 1/4, 1 1/2	5	12A39	13A15-5
325-9L210E	Line Regulator with OPD	1 1/2, 2"	5	12A49	13A25

In 5 PSI systems, an appliance regulator (RV Series or 210 with vLimiter) must be installed in series with a factory-assembled 325-L line regulator with OPD and vLimiter.

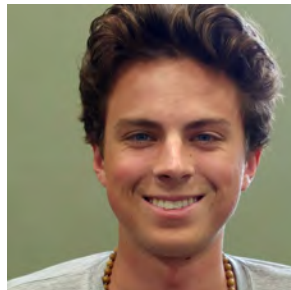
We stock a wide selection of Maxitrol regulators. Note that some of the OPD models require a couple days lead time.



**Brian Cox**  
Inside Sales Manager  
(303) 697-6701 ext. 103  
[b\\_cox@lincenergysystems.com](mailto:b_cox@lincenergysystems.com)



**KC Forward**  
Sales Director  
303-817-0148  
[kc.forward@lincenergysystems.com](mailto:kc.forward@lincenergysystems.com)



**Preston Marcoux**  
Mechanical Engineer  
(303) 697-6701 ext. 118  
[p.marcoux@lincenergysystems.com](mailto:p.marcoux@lincenergysystems.com)



**Tom McDougal**  
Senior Engineer  
(303) 697-6701 ext. 104  
[t.mcdougal@lincenergysystems.com](mailto:t.mcdougal@lincenergysystems.com)



**Hilary Petronzio**  
Inside Sales  
(303) 697-6701 ext. 116  
[h.petronzio@lincenergysystems.com](mailto:h.petronzio@lincenergysystems.com)