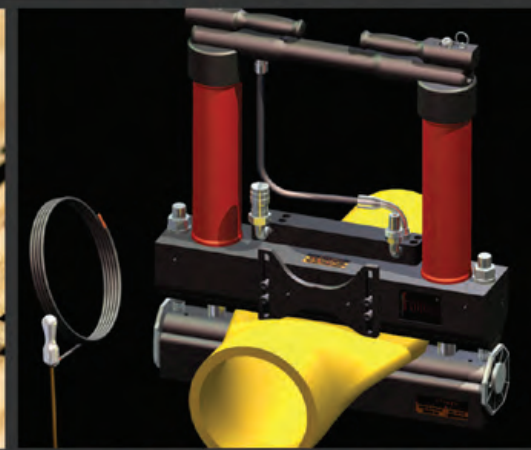
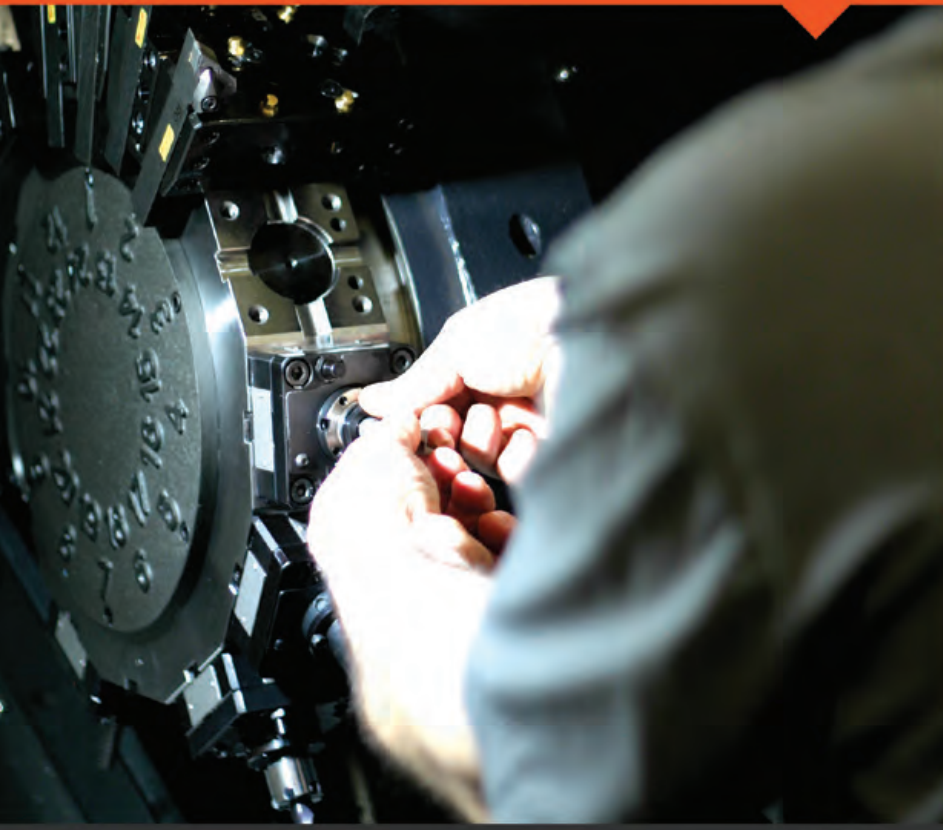


Footage



2018
GAS UTILITY
PRODUCTS



Footage

Manual & Hydraulic Squeeze Off Tools

SQUEEZE OFF FEATURES

INDEXABLE GAUGE PLATES



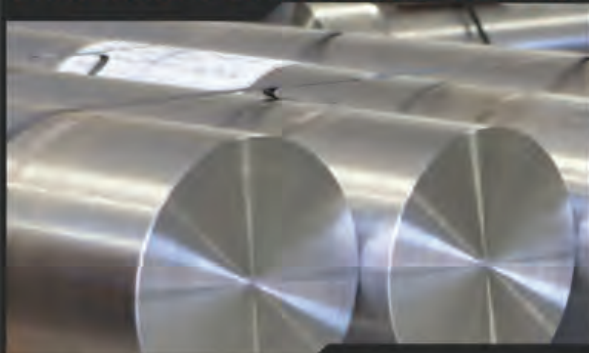
Most Manual & Hydraulic squeeze off tools feature positive locking, indexable gauge plates for easy selection of size & SDR to ensure a proper squeeze.

SWING-OUT/LOCK-IN BARS



The unique lock-in / swing-out bottom bar design allows for quick & easy access to the pipe, even in confined spaces.

AIRCRAFT GRADE ALUMINUM



Squeeze bars on most manual & hydraulic tools are CNC machined to exact specifications using high quality aircraft grade aluminum.

LOCK DOWN BOLTS



Hydraulic tools feature lock down bolts on each side of the squeeze bars to ensure a squeeze is maintained even when hydraulics are removed.

SLIDING TORQUE BAR



Torque bar on manual tools allow for maximum leverage and can be removed if necessary to accommodate tighter applications.

GROUNDING SPIKES



All squeeze tools include grounding spike to protect the tool and operator from static discharge.

LIFETIME WARRANTY!

C132



For **1/2"** to **3/4"** PE Pipe
1.5lbs / Height 2.5" / Width 10"
ASTM Approved

Standard Jaw Stops

1/2" CTS (SDR 7)
1/2" IPS (SDR 9.33)
3/4" CTS (SDR 9.8)
3/4" IPS (SDR 11, 11.5)

C50



For **1/2"** to **1-1/4"** PE Pipe
4.5lbs / Height 8.5" / Width 8"
ASTM Approved

Standard Gauge Plate Stops

1/2" CTS (SDR 7)

1/2" IPS (SDR 9.33)

3/4" CTS (SDR 9.8)

3/4" IPS (SDR 11, 11.5)

1" CTS (SDR 11, 11.5)

1" IPS (SDR 11)

1-1/4" (SDR 9.33, 10)

C100



Standard Gauge Plate Settings

- 1/2" CTS (SDR 7)
- 3/4" IPS (SDR 11)
- 1" CTS (SDR 11, 11.5)
- 1" IPS (SDR 11)
- 1-1/4" (SDR 10)
- 1-1/2" (SDR 11)
- 2" (SDR 11)

For **1/2"** to **2"** PE Pipe
9.5lbs / Height 12" / Width 6.5"
ASTM Approved

C156



For **1" to 4"** PE Pipe
27lbs / Height 19.5" / Width 10.5"
ASTM Approved

Standard Gauge Plate Settings

- 1" IPS (SDR 11)
- 1-1/4" (SDR 10, 11, 11.5)
- 1-1/2" (SDR 11)
- 2" (SDR 11, 11.5)
- 3" (SDR 11, 11.5, 13.5)
- 4" (SDR 11, 11.5)

C200



For **1/2"** to **2"** PE Pipe
Weight **28lbs** / Height **5'**
ASTM Approved

Standard Gauge Plate Settings

- 1/2" CTS (SDR 7)
- 3/4" IPS (SDR 11)
- 1" CTS (SDR 11, 11.5)
- 1" IPS (SDR 11)
- 1-1/4" (SDR 10)
- 1-1/2" (SDR 11)
- 2" (SDR 11)

C4.00



For **2"** to **6"** PE & HDPE Pipe
50lbs / Height 20" / Width 13.5"
Worm Gear Operated
ASTM Approved

Standard Gauge Plate Settings

2" (SDR 11)
3" (SDR 11, 11.5, 13.5)
4" (SDR 11, 11.5, 13.5)
6" (SDR 11, 11.5, 13.5, 21)

C177



For **1"** to **4"** PE & HDPE Pipe
42lbs / Height 19.5" / Width 10.5"
Pump Required: Model C148-28
ASTM Approved

Standard Gauge Plate Settings

- 1" IPS (SDR 11)
- 1-1/4" (SDR 10, 11, 11.5)
- 1-1/2" (SDR 11)
- 2" (SDR 11, 11.5)
- 3" (SDR 11, 11.5, 13.5)
- 4" (SDR 11, 11.5)

C600



For **2"** to **6"** PE & HDPE Pipe
75lbs / Height 20" to 29.4" / Width 19"
Pump Required: Model C148-355
ASTM Approved

Standard Gauge Plate Settings

2" (SDR 11)
3" (SDR 11, 11.5, 13.5)
4" (SDR 11, 11.5, 13.5)
6" (SDR 11, 11.5, 13.5, 21)

C850



For **4"** to **8"** PE & HDPE Pipe
123lbs / Height 27" to 39.5" / Width 22" to 26.5"
Pump Required: Model C148-355
ASTM Approved

Standard Gauge Plate Settings
4" (SDR 9, 11, 11.5, 13.5)
6" (SDR 9, 11, 11.5, 13.5, 21)
8" (SDR 9, 11, 11.5, 13.5, 21)

C1200



For **8"** to **12"** PE & HDPE Pipe
525lbs / Height 37" to 51" / Width 34"
Pump Required: Model C1200-25
ASTM Approved

Standard Gauge Plate Settings
8" (SDR 9, 11, 11.5, 13.5)
10" (SDR 11, 11.5, 13.5, 15.5)
12" (SDR 9, 11, 11.5, 13.5, 15.5)

C165



For **3/4"** to **2"** Anodeless Gas Risers

45lbs / Height 18" / Width 7.2"

Pump Required: Model C148-165EG

ASTM Approved

C36S



86 Tons of Squeezing Force
For **3"** to **6"** STEEL Pipe
260lbs / Height 31" / Width 23"
Pump Required: Model C1200-25
ASTM Approved

C812S



188 Tons of Squeezing Force

For **8"** to **12"** STEEL Pipe

920lbs / Height 43" / Width 36"

Pump Required: Model C812S-AK1

ASTM Approved

SQUEEZE OFF PUMPS

C148-28



Lightweight single stage hydraulic hand pump c/w pressure gauge and 8' hose.

For model C177-A2

C148-355



Pump kit w/ controlled release valve, pressure gauge and 8' hoses.

For model C600-A002 & C850-A1

C1200-25



Air/Hydraulic pump kit, foot operated c/w controlled release valve, pressure gauge and 20' hoses.

For model C1200-A2 & C36S-A1

C148-165EG



Lightweight single stage hydraulic hand pump c/w pressure gauge lock out needle valve and 15' hose.

For model C165-AK1

C812S-AK1



Air/Hydraulic pump kit, lever operated c/w filter/lubricator.

For model C812S-A1

Footage

BIG SHOT Underground Piercing Tools

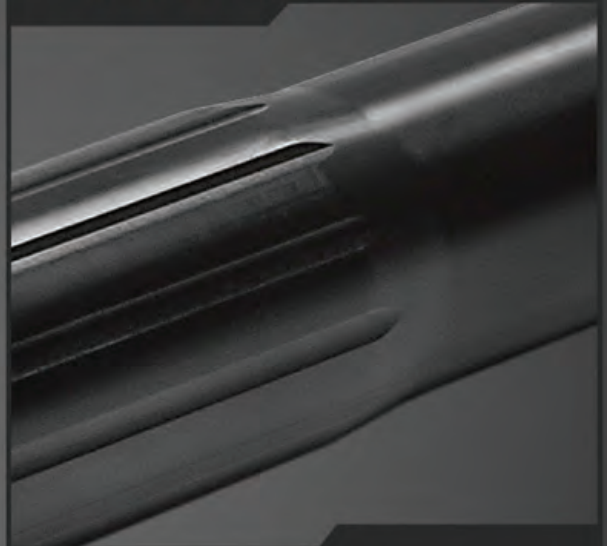
BIG SHOT FEATURES

CHROMOLY STEEL BARRELS



Chromoly steel barrels are deep hole bored from solid billets to provide added strength and longer service life.

REDUCED MIDSECTION



All big shot barrels are undercut in their mid-section to reduce resistance and increase speed.

COATED PISTON DESIGN



Big Shot pistons are treated with a corrosion resistant phosphate coating to improve performance and reduce maintenance.

URETHANE SHOCK ABSORBERS



Cartidge style urethane filled shock absorbers provide effective dampening and are easy to replace.

INDUSTRY LEADING 3 YEAR WARRANTY!

BIGSHOT

Underground Piercing Tools



4 models to choose from:

U215 Diameter: 2" Weight: 23lbs Length: 35"

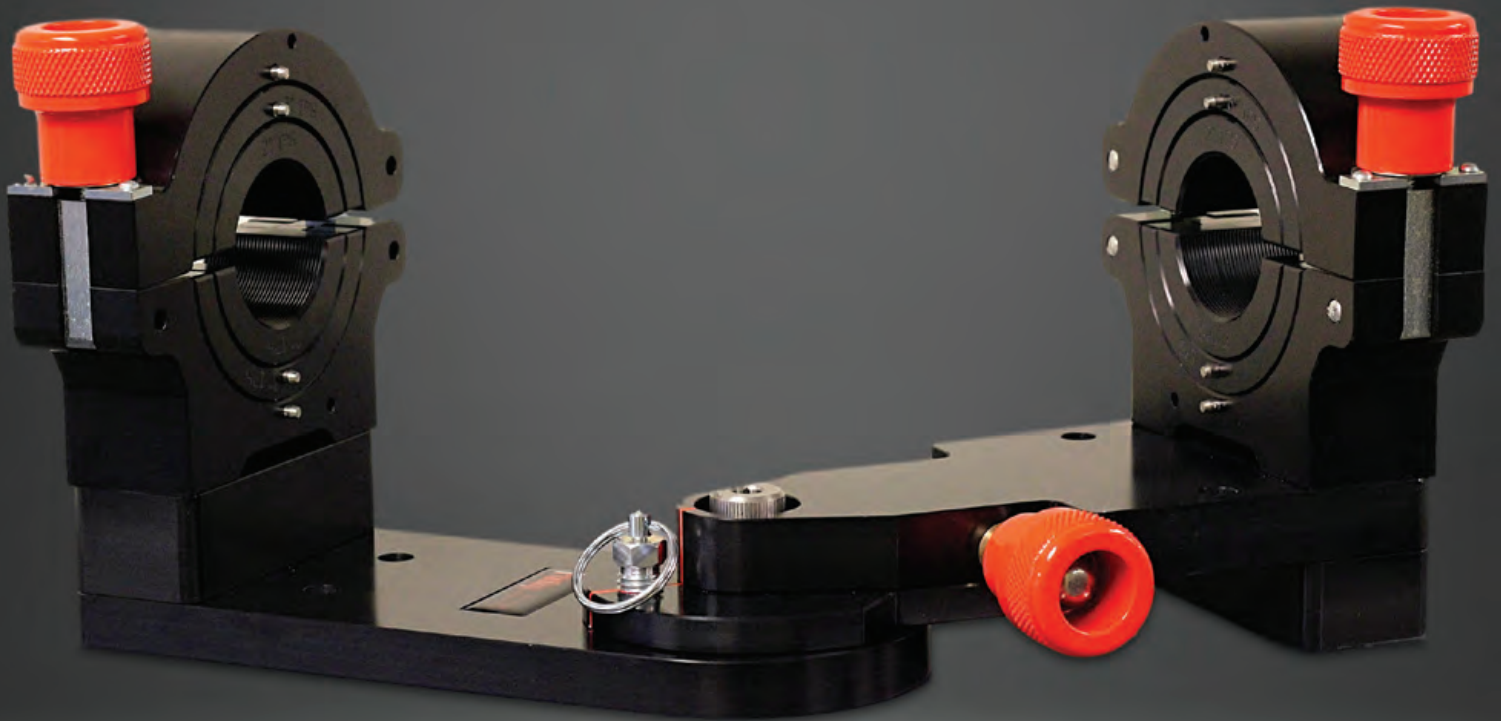
U262 Diameter: 2.5" Weight: 56lbs Length: 55"

U300 Diameter: 3" Weight: 75lbs Length: 55"

U400 Diameter: 4" Weight: 108lbs Length: 59"

A400

2"-4" Alignment Clamp



Complete with **2"** IPS & **3"** IPS Inserts
Designed to work with coil pipe

Alignment Clamp Features

- ▶ Straight, 45° & 90° Positions
- ▶ 10° Fine Adjustment (+-5°)
- ▶ Aircraft Grade Aluminum

PIPEPULLERS



1/2" CTS through 2" IPS
For MDPE & HDPE Pipe

PE Pipe Pullers Sizes

1/2" (SDR 11) & 1" (SDR 13.5) CTS
3/4" (SDR 11/11.5), 1" (SDR 13.5),
1-1/4" (SDR 11/11.5) & 2" (SDR 13.5) IPS

Footage

LinC

Energy Systems

making a measurable difference

FOOTAGE TOOLS

1-54 AUDIA CRT. VAUGHAN, ON, CANADA L4K 3N4

1-888-737-3668 • WWW.FOOTAGETOOLS.COM