

JL SERIES PARTS & ASSEMBLIES

5/8" THRU 2" SIZES

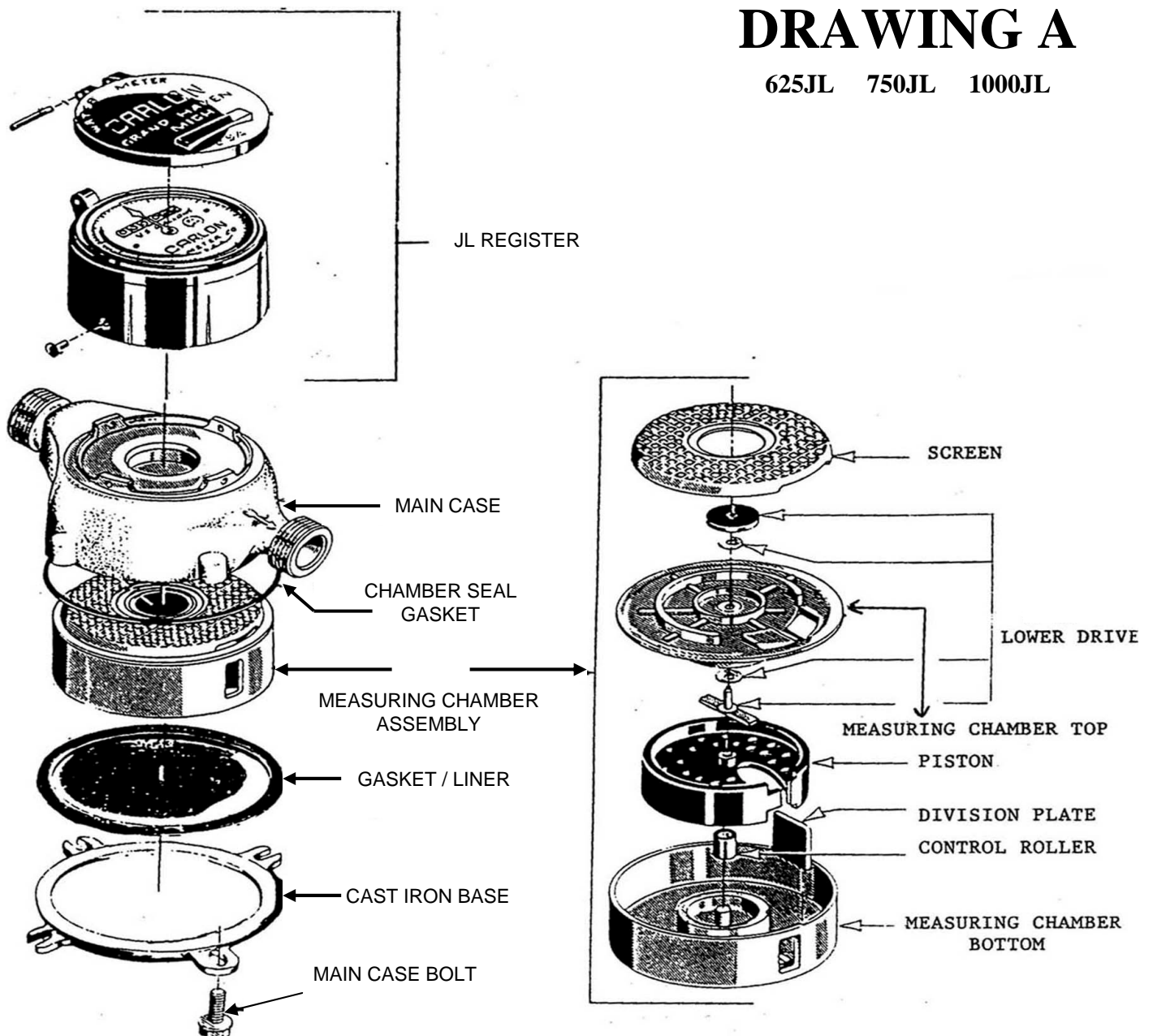
Drawing A shows the breakdown of parts for the 625JL, 750JL, and 1000JL series meters.

Drawing B shows the breakdown of parts for the 150JL and 200JL series meters.

For ordering information of parts, continue to last page and view part assemblies.

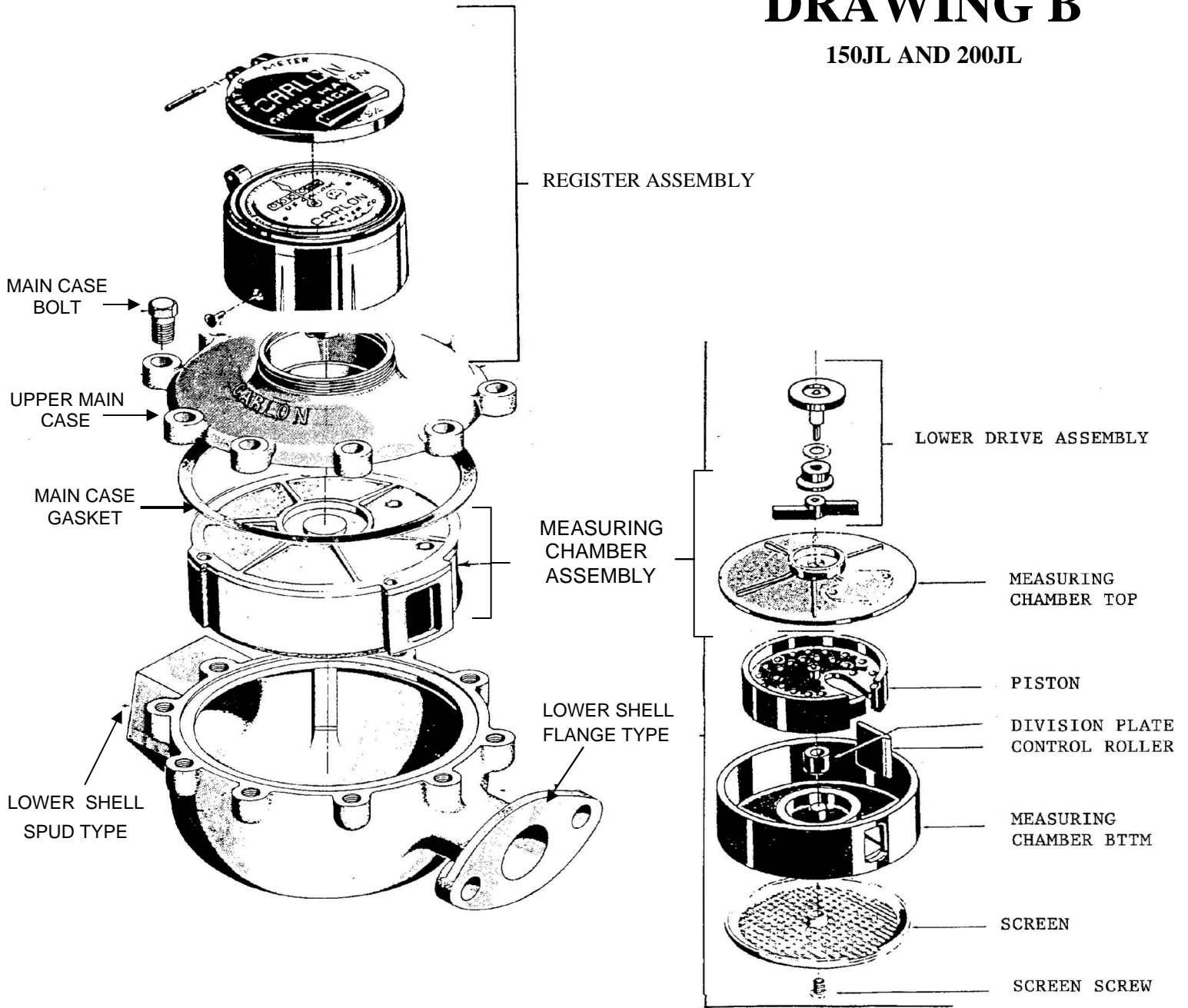
DRAWING A

625JL 750JL 1000JL



DRAWING B

150JL AND 200JL



MODEL	METER/PIPE SIZE	MODEL	METER/PIPE SIZE
625JL	5/8" X 1/2"	150JLF	1 1/2"
6251JL	5/8" X 3/4"	150JLS	1 1/2"
750JL	3/4" X 3/4"	200JLF	2"
1000JL	1"	200JLS	2"

JL SERIES PARTS & ASSEMBLIES

5/8" THRU 2" SIZES

WHEN ORDERING, PLEASE SPECIFY: 1. QUANTITY 2. METER SIZE 3. ASSY NUMBER & DESCRIPTION
(WHEN ORDERING PARTS, AN UPPER SHELL CASTING MARK AND/OR SERIAL NUMBER IS REQUIRED)

ASSEMBLY NUMBER	ASSEMBLY DESCRIPTION	PARTS ASSEMBLY LIST
A31(MODEL NUMBER) Example: A31750JL	JL REGISTER	REGISTER LID, HINGE PIN LOCKING PINS
A309R (MODEL NUMBER) Example: A309R750JL	GENERATOR REGISTER	GENERATOR REGISTER
A31R9	REMOTE READER / OVR FOR GENERATOR REGISTER	REMOTE READER
A14 (MODEL NUMBER)	625, 750 & 1000 JL METER BODY ASSEMBLY	METER BODY CHAMBER SEAL GASKET MAIN GASKET/LINER CAST IRON METER BASE
A14 (MODEL NUMBER)	150JL & 200JL METER BODY	LOWER MAIN CASE UPPER MAIN CASE MAIN CASE GASKET MAIN CASE BOLTS ALL SCREWS NECESSARY
A33 (MODEL NUMBER)	MEASURING CHAMBER ASSEMBLY	CHAMBER BOTTOM CHAMBER TOP LOWER DRIVE ASSEMBLY PISTON CONTROL ROLLER DIVISION PLATE SCREEN ALL SCREWS NECESSARY CHAMBER SEAL GASKET MAIN CASE GASKET
A30 (MODEL NUMBER)	CAST IRON BASE KIT	CAST IRON BASE GASKET/LINER BOLTS
A21 (MODEL NUMBER)	LOWER DRIVE ASSEMBLY	LOWER DRIVE SHAFT WASHERS MAGNET GASKETS
A35 (MODEL NUMBER)	SEAL & SCREEN KIT	MAIN CASE GASKET CONNECTION GASKETS CHAMBER SEAL GASKETS GASKET/LINER SCREEN AND SCREWS

MINIMUM BILLING: \$50.00